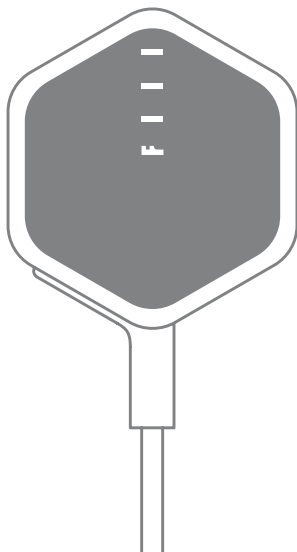


F I I L C A R A T P r o

F I I L M E N O W



Important Safety Instructions

Please read the following safety instructions carefully before using this product. Please make sure to include these safety instructions with the product when deliver to a third party.

Health and safety

- Do not use the product in case it is apparently damaged;
- Do not use the product at a high volume level for an extended period of time;
- Do not use the product while driving or being engaged in activities that require full concentration;
- Keep the product, its packaging and accessories out of the reach of children and pets to avoid choking hazard;
- Keep the product away from medical devices that may be affected by magnetic field, such as an implanted cardiac pacemaker.

Product care

- Keep this product dry and at room temperature, avoid long time exposure to high temperature or humidity environments;
- Use accessories only provided by fiil;
- Excessive signal level may cause damaging overload;
- Clean the product only with dry and soft cloth.

Battery warning!

The product uses lithium polymer battery. Improper usage may lead to the risk of fire or burn. Please use the charger only supplied by qualified manufacturer (recommended output: voltage 5V, current>100mA) or charge the product via PC USB port.

Specification and disclaimer

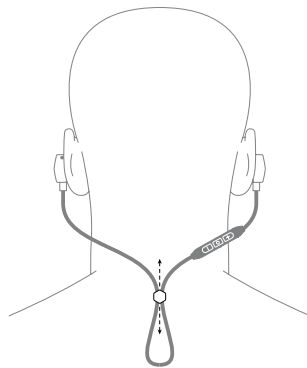
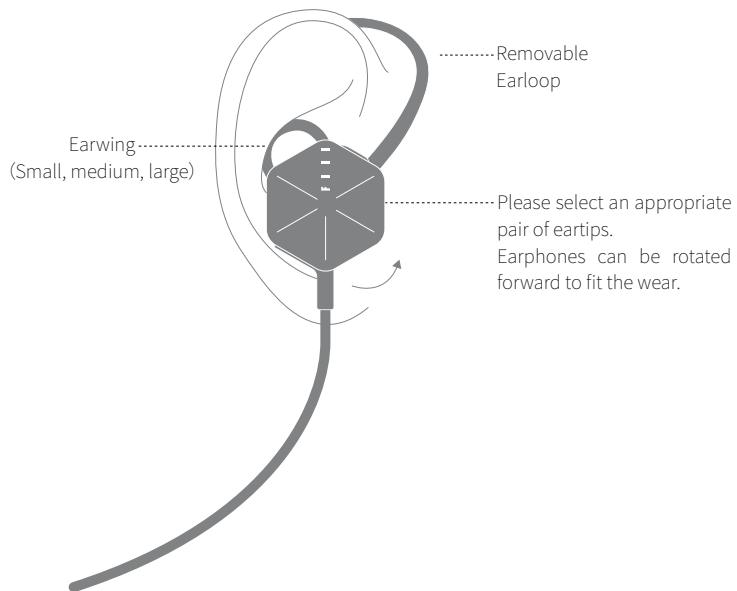
- The product is designed for portable devices and high fidelity systems;
- Any usage other than those specified in user manual is deemed as misuse;
- Please note that fiil will accept no responsibility for any loss incurred by inappropriate misuse.

* ‘fiil’ /fil/ is a registered trademark(TM) of Fengfan (Beijing) Technology Co., Ltd. “Made for iPod,” “Made for iPhone,” and “Made for iPad” mean that an electronic accessory has been designed to connect specifically to iPod, iPhone, or iPad, respectively, and has been certified by the developer to meet Apple performance standards.

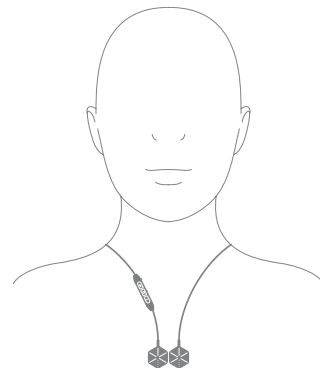
Apple is not responsible for the operation of this device or its compliance with safety and regulatory standards. Please note that the use of this accessory with iPod, iPhone, or iPad may affect wireless performance.

iPad, iPhone, iPod, iPod classic, iPod nano, iPod touch, and Retina are trademarks of Apple Inc., registered in the U.S. and other countries. iPad Air, and iPad mini are trademarks of Apple Inc. Made for iPhone 6 plus, iPhone 6, iPhone 5s, iPhone 5c, iPhone 5, iPhone 4s, iPad Air 2, iPad mini 3, iPad Air, iPad mini 2, iPad mini, iPad (3rd and 4th generation), iPad 2, iPod touch (5th generation).

How to Wear

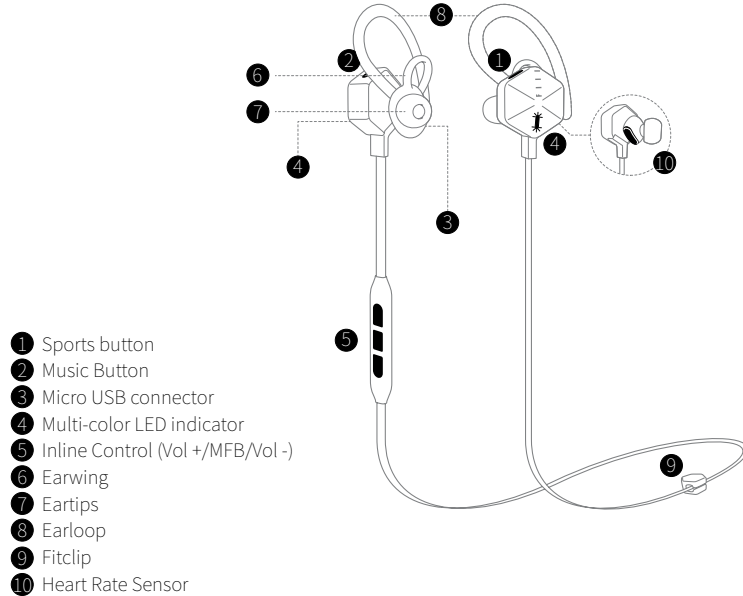


Earphone Mode:
Use Fitclip to adjust cable length,
the excessive parts can be hidden
in collar.



Necklace Mode:
Join magnetic earbuds together to
turn on low power pedometer mode.

Main User Interfaces



Bluetooth Mode

(Capable to connect with two Bluetooth devices simultaneously)

●STEP1 Pairing

Brand new FIIL Carat Pro earphones will automatically go into Bluetooth pairing mode once turned on (by pressing and holding the MFB until the LED indicator lights green), the LED indicator will continue to blink blue. For paired earphones, press and then hold the MFB until the LED indicator blinks blue to enter pairing mode again.

●STEP2 Connection

APP wizard connection: Please scan the QR code on page 7 to download fiil+ APP and connect as instructed;

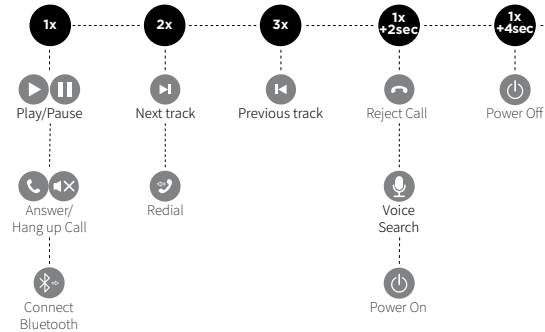
Manual connection: Enter setup menu of audio source devices, select “search device” in “Bluetooth” then select “FIIL Carat Pro” in the device list to connect.

Fiil+, Make Your Fiil Carat Pro Smarter



- Features such as Firmware upgrade, Function Deployment and Sound-Effect Setup are all available in fiil+. Scan the QR code to install now.

Inline Control



Dedicated Music Button

- Switch Local-Bluetooth source: Single press music button
- Switch all songs/my favourite: Double press music button
- Switch Sequential/Shuffle play: Medium press music button (Press 2s until a tone is heard.)
- Switch the music indicator light on/off: Triple press music button (Light color/blink mode can be customized in fiil+)
- Local Music Storage (built-in 4GB memory): Please use PC to connect with earphone's Micro-USB port to copy files.

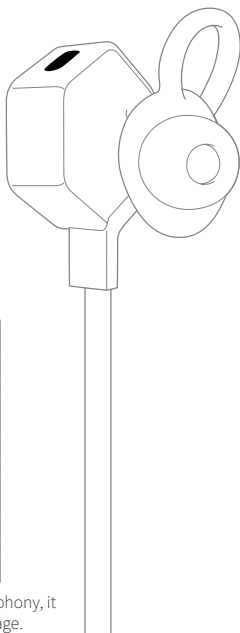
Refer to below table for supported audio format:

Audio Format	Compression Mode	Sample Rate (KHz)	Bit Depth (bit)	Comments
MP3	Lossy	44.1k	16	320kCBR
		44.1k	16	100VBR
		48k	16	128kCBR
AAC	Lossy	44.1k	16	320kCBR.acc
		44.1k	16	32kCBR.acc
		48k	16	128kVBR.acc
FLAC	Lossless	44.1k	16	
		48k	16	
WAV	Lossless	44.1k	16	PCM
		48k	16	
		96k	16	

* Local mode will disconnect Bluetooth music but keep bluetooth telephony, it allows fiil+ APP to control audio play, manage playlist and music storage.

** Only support FAT32 filesystem, please do not format to NTFS or other system.

*** When referring to memory capacity, one gigabyte, or GB, equals one billion bytes. Your computer's operating system may use a different standard of measurement and report a lower capacity. In addition, some of the listed capacity is used for formatting and other functions, and thus will not be available for data storage.

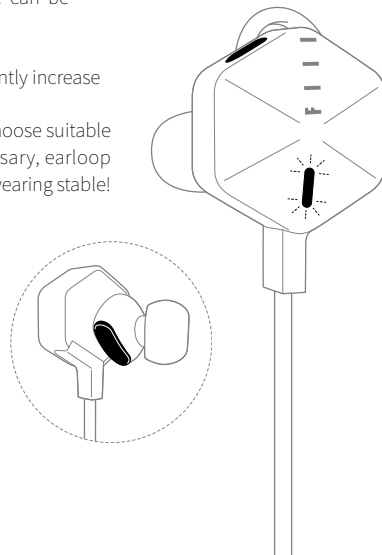


Dedicated Sports Button

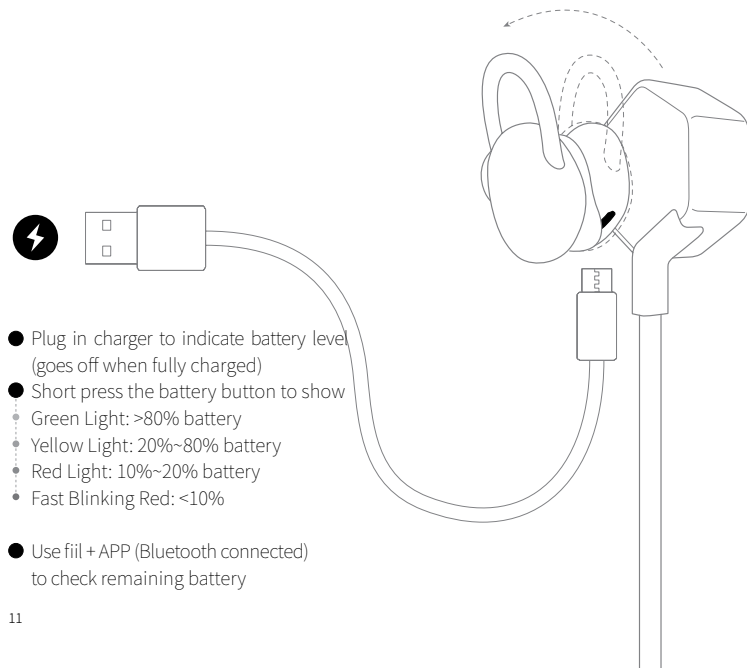
- Real-time sports status reporting: single press Sports button
- Start/end single workout: double press Sports button
- Lights on/off sports indicator: triple press Sports button (indicator color/blink mode can be customized in fiil+ APP)

* Note: sports indicator will significantly increase power consumption!

** To ensure HRM accuracy, please choose suitable eartips and earwings. When necessary, earloop shall be installed to make sure wearing stable!



Battery Charging and Capacity Indicator



- Plug in charger to indicate battery level (goes off when fully charged)
- Short press the battery button to show
 - Green Light: >80% battery
 - Yellow Light: 20%~80% battery
 - Red Light: 10%~20% battery
 - Fast Blinking Red: <10%
- Use fiil + APP (Bluetooth connected) to check remaining battery

Packaging Content



Earwings X3
L/M/S



Eartips X4
L/M/S/XS



Earloops X1

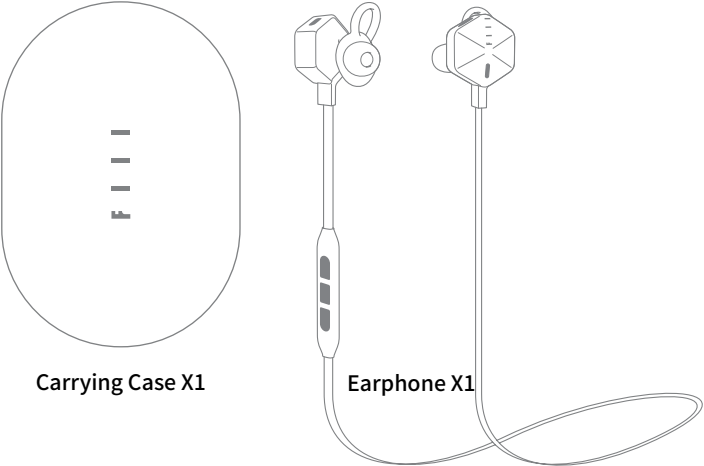


Fitclip X1



Charging Cable X1

Packaging Content



Product Parameters

Item	Specifications
Weight and Size	~18g
User Mode	Bluetooth Wireless, Local Mode with built-in audio player (4GB memory)
Bluetooth	Ver. 4.2, supported protocols: HSP v1.2, HFP v1.6, A2DP v1.3, AVRCP v1.5 Supported modes: EDR(2EV3), SCO (HV1, HV2, HV3) , eSCO(EV3), sniff, secure pairing
Audio specifications	BT range: up to 50m. Paired devices: up to 8 and may simultaneously connect with 2 Bluetooth devices. Pairing code: 0000. Air upgrade OTA: iOS and Android devices supported. For more information please refer to fiil+ APP. Supported Codec: AAC (for iOS) /Apt-x/SBC; Local decode: FLAC/AAC/MP3/WAV, please refer to page9 for detail; Speaker specifications: fuul range balanced armature driver, frequency range: 15Hz-22kHz; Supported sound effects: living room, theatre, cinema, bass boost and treble boost. For more information please refer to fiil+ APP.
Power and battery	Rechargeable lithium-polymer battery; music/talk time: up to 6 Hours (medium volume); Bluetooth standby time: up to 7 days; charging time: ~ 1.5 Hours
Operating environment	Operating temperature: 0°C to 50°C; storage temperature: -30°C to 70°C; IEC60529-IP65 Dustproof/Water resistance Certified
Voice reminder	English/Mandarin
Main features	High fidelity fully compatible Bluetooth codecs, necklace mode, sports coach, heart rate monitor, customized sports inidicator, multilingual voice reminders, multipoint connection. For more information please refer to fiil+ APP
Certification	BQB Bluetooth 4.2,SRRC,RoHS,REACH,FCC,IC,CE,IP65

Warranty and Services



FIIL warranty: guaranteed product replacement for quality issues within one year

Scan the QR code above with mobile phone to download fiil+ APP (FAQ inside).

Enter information to register device.

Contact the customer service for any quality issue via fiil+/Facebook/ Twitter service account ('Fiil Headphone') /email customer@fiil.com



FCC and IC COMPLIANCE STATEMENT

This device complies with Part 15 of the FCC Rules and Industry Canada License-exempt RSS standard(s).

Operation is subject to the following two conditions:

1. This device may not cause harmful interference, and
2. This device must accept any interference received, including interference that may cause undesired operation.

This equipment has been tested and found to comply with the limits for a Class B digital device, pursuant to Part 15 of the FCC Rules / with Canadian ICES-003. These limits are designed to provide reasonable protection against harmful interference in a residential installation. This equipment generates, uses, and can radiate radio frequency energy and, if not installed and used in accordance with the instructions, may cause harmful interference to radio communications.

However, there is no guarantee that interference will not occur in a particular installation. If this equipment does cause harmful interference to radio or television reception which can be determined by turning the radio or television off and on, the user is encouraged to try to correct interference by one or more of the following measures:

1. Reorient or relocate the receiving antenna.
2. Increase the separation between the equipment and receiver.
3. Connect the equipment into an outlet on another circuit.
4. Consult the dealer or an experienced radio/TV technician for help.

CAUTION STATEMENT

Any changes or modifications not expressly approved by the party responsible for compliance could void the user's authority to operate the equipment.



Correct disposal of This Product (Waste Electrical & Electronic Equipment)
(Applicable in the European Union and other European countries with separate collection systems)

This marking shown on the product or its literature indicates that it should not be disposed with other household wastes at the end of its working life.

To prevent possible harm to the environment or human health from uncontrolled waste disposal, please separate this from other types of wastes and recycle it responsibly to promote the sustainable reuse of material resources. Household users should contact either the retailer where they purchased this product, or their local government office for details of where and how they can take this item for environmentally safe recycling. Business users should contact their supplier and check the terms and conditions of the purchase contract.

This product should not be mixed with other commercial wastes for disposal.



CAUTION

Risk of explosion if battery is replaced by an incorrect type.
Dispose of used batteries according to the instructions.



To prevent possible hearing damage, do not listen at high volume levels for long periods.



CE Mark Warning

RF Exposure Information

The device meets the EU requirements (1999/519/EC) on the limitation of exposure of the general public to electromagnetic fields by way of health protection.

Note: The maximum average emitted power of the device is less than 20mW.

F I I I

**Certificate of
qualification**

inspector:

QC
PASS
06

BORN TO LISTEN

F I I L M E N O W



www.fiil.com



customer@fiil.com